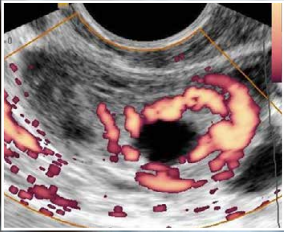
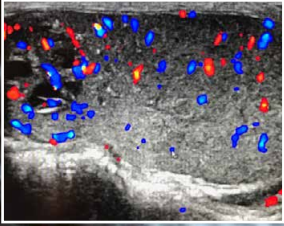
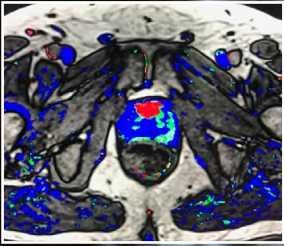


CHANGING MEDICINE.  
CHANGING LIVES.®



## TOPICS

Complicated Pregnancies  
Ectopic Pregnancy  
Indeterminate Adnexal Mass  
Fibroid Embolization  
ACR Tools  
Testicular Cancer and  
Epidemiology  
Heterogeneous Testes  
Prostate Lesions

# IOWA RADIOLOGICAL SOCIETY

## 2017 FALL MEETING

SATURDAY  
OCTOBER 21, 2017

MARRIOTT CORALVILLE HOTEL &  
CONFERENCE CENTER  
300 EAST 9TH STREET  
CORALVILLE, IA

Jointly Provided by: The Iowa Radiological Society  
and The Department of Radiology, University of Iowa  
Roy J. and Lucille A. Carver College of Medicine



UNIVERSITY OF IOWA  
CARVER COLLEGE  
OF MEDICINE

University of Iowa Health Care

# GENERAL INFORMATION

## Intended Audience

Academic and community-based radiologists, radiology resident physicians, fellows, and radiology technologists from the state of Iowa.

## Purpose

It is our intent that practitioners specializing in imaging will gain increased awareness and knowledge of important topics in genitourinary imaging, overdiagnosis in radiology, improvement of imaging quality, and apply this knowledge to daily clinical work.

## Educational Objectives

Upon completion of this program learner should be able to:

- Illustrate use of MRI in complicated pregnancies such as those with placenta accreta.
- Describe the use of MR for the indeterminate adnexal mass.
- Indicate how MRI will be useful before and after fibroid embolization.
- State what is meant by “Medicare Access and Chip Reauthorization Act.”
- Specify how quality measures can be applied to imaging.
- Outline how ACR tools such as registries can aid in demonstrating your practice is continuously working to improve quality.
- Explain epistemic basis of over diagnosis.
- Explain why radiologists are implicated in over diagnosis.
- Outline prescriptions for over diagnosis.
- Describe testicular anatomy and scanning technique.
- Explain newer thoughts on sonography of testicular cancer and epidemiology.
- Outline etiology and significance of heterogeneous testes.
- Outline newest PIRADS version and associated imaging findings.
- Explain MRI US fusion biopsy for prostate lesions.
- Describe and explain critical findings not to miss in 2nd and 3rd trimester ultrasound.
- Identify ectopic pregnancy on ultrasound.

## Credit

This activity has been planned and implemented in accordance with the Essential Areas and Policies of the Accreditation Council for Continuing Medical Education (ACCME)

through the joint providership of the University of Iowa Roy J. and Lucille A. Carver College of Medicine and the Iowa Radiological Society. The UI Carver College of medicine is accredited by the ACCME to provide continuing medical education for physicians.

The University of Iowa Carver College of Medicine designates this live activity for a maximum of 5.25 *AMA PRA Category 1 Credits*<sup>™</sup>. Physicians should claim only the credit commensurate with the extent of their participation in the activity.

## Registration

The registration fee is \$150 for members of the Iowa Radiological Society and alumni of the College of Medicine’s Department of Radiology. The registration fee for other physicians is \$180. Fellows and Radiology residents in training may attend free of charge with a letter of certification from their director of education. The fee covers registration, instruction, educational materials, refreshments, lunch, and awarding of continuing education credits.

## Meeting Location

Marriott Coralville Hotel & Conference Center  
300 East 9th Street  
Coralville, IA, 52241  
TEL: (319) 688-4000

## Housing

Participants are responsible for making their own hotel reservations and may do so by contacting the Iowa City/Coralville Area Convention and Visitors Bureau at (800) 283-6592, or any hotel in the Iowa City area including the Coralville Marriott at (319) 688-4000. Rates are not guaranteed.

## Parking

Parking is available in garage adjacent to the Coralville Marriott at prevailing rates.

Determination of educational content for this program and the selection of speakers are responsibilities of the program director. Firms providing financial support did not have input in these areas.

**DISCLOSURE POLICY:** Everyone in a position to control the content of this educational activity will disclose to the CME provider and to attendees all relevant financial relationships with any commercial interest.

# FACULTY

## Program Faculty

### **Robert Harris, MD, MPH, FACR**

Clinical Professor of Radiology  
Division of Body Imaging  
University of Iowa Hospitals and Clinics  
Iowa City, IA

### **Saurabh Jha, MBBS, MRCS, MS**

Associate Professor of Radiology  
Hospital of The University of Pennsylvania  
Philadelphia, PA

### **Anne Kennedy, MB, BCH, BAO**

Clinical Professor of Radiology  
and Imaging Sciences  
Adjunct Professor of Obstetrics/Gynecology  
University of Utah Hospital  
Salt Lake City, UT

### **Deborah Levine, MD, FACR**

Past Vice President of the American College  
of Radiology  
Vice Chair of Academic Affairs, Department  
of Radiology  
Director, Obstetric and Gynecologic Ultrasound  
Department of Radiology Beth Israel Deaconess  
Medical Center  
Boston, MA

### **Maheen Rajput, MD**

Clinical Associate Professor of Radiology -  
Division of Body Imaging  
Fellowship Program Director, Body Imaging  
University of Iowa Hospitals and Clinics  
Iowa City, IA

## Moderators

### **Colin J. O'Brien, MD**

President and Diagnostic Radiologist  
Radiological Medical Services, PC  
Coralville, IA

### **Alan Stolpen, MD, PhD, FACR**

Associate Professor of Radiology  
Division of Body Imaging  
University of Iowa Roy J. and Lucille A. Carver  
College of Medicine  
Iowa City, IA

## Iowa Radiological Society Executive Committee

### *President*

### **Eve Clark, MD**

Clinical Associate Professor of Radiology  
University of Iowa Roy J. and Lucille A. Carver  
College of Medicine  
Iowa City, IA  
eve-clark@uiowa.edu

### *Immediate Past President*

### **Larry Burr, MD**

Radiological Consultants of Iowa  
Cedar Rapids, IA  
l.burr@mac.com

### *President Elect*

### **Colin J. O'Brien, MD**

President and Diagnostic Radiologist  
Radiological Medical Services, PC  
Coralville, IA  
colinjobrien@gmail.com

### *Secretary/Treasurer*

### **Bruno Policeni, MBA, MD**

Clinical Associate Professor of Radiology  
University of Iowa Roy J. and Lucille A. Carver  
College of Medicine  
Iowa City, IA  
bruno-policeni@uiowa.edu

## Program Planning Committee

### **Catherine Metz, MD, Course Director**

### **Larry Burr, MD**

### **Eve Clark, MD**

### **Prashant Nagpal, MBBS**

### **Colin O'Brien, MD**

### **Bruno Policeni, MD**

### **Alan Stolpen, MD, PhD, FACR**

### **Scott Truhlar, MD, FACR**

## FURTHER INFORMATION:

### CONTINUING MEDICAL EDUCATION DIVISION

University of Iowa Carver College of Medicine  
100 CMAB  
Iowa City IA 52242-1101

Phone: (319) 335-8599 | FAX: (319) 335-8327

**Morning Session**

Moderators: *Colin J. O'Brien, MD and Alan Stolpen, MD, PhD, FACR*

- 7:30 am Registration**
- 7:55 Welcome and Introductory Remarks**  
Eve Clark, MD
- 8:00 MIPs and MACRA and How the ACR Can Help You**  
Deborah Levine, MD, FACR
- 8:45 Don't miss this! Things to be Wary of on OB Ultrasound**  
Anne Kennedy, MB, BCH, BAO
- 9:30 Break**
- 9:45 Solving the Problem Pelvic Ultrasound with MRI**  
Deborah Levine, MD, FACR
- 10:30 Ectopic Pregnancy: Oh the places we can go...**  
Anne Kennedy, MB, BCH, BAO
- 11:15 Lunch – Dennis Tibben**  
Director of Government Affairs, Iowa Medical Society

**Afternoon Session**

Moderators: *Colin J. O'Brien, MD and Alan Stolpen, MD, PhD, FACR*

- 12:45 pm Overdiagnosis - Facts & Controversies**  
Saurabh Jha, MBBS, MRCS, MS
- 1:30 Applying the Latest PIRADS to Prostate MRI for Fusion Biopsy: How to Build a Collaborative Effort with Your Local Urologists**  
Maheen Rajput, MD
- 2:15 Break**
- 2:30 Newer Concepts in Testicular Ultrasound**  
Robert Harris, MD, MPH, FACR
- 3:15 Consumerism and Radiology**  
Saurabh Jha, MBBS, MRCS, MS
- 4:00 Break/CME Program Adjourns**
- 4:15 Iowa State Chapter Business Meeting**
- 5:00 Business Meeting Adjourns**

The University of Iowa prohibits discrimination in employment, educational programs, and activities on the basis of race, creed, color, religion, national origin, age, sex, pregnancy, disability, genetic information, status as a U.S. veteran, service in the U.S. military, sexual orientation, gender identity, associational preferences, or any other classification that deprives the person of consideration as an individual. The university also affirms its commitment to providing equal opportunities and equal access to university facilities. For additional information on nondiscrimination policies, contact the Director, Office of Equal Opportunity and Diversity, the University of Iowa, 202 Jessup Hall, Iowa City, IA, 52242-1316, 319-335-0705 (voice), 319-335-0697 (TDD), diversity@uiowa.edu.

Individuals with disabilities are encouraged to attend all University of Iowa sponsored events. If you are a person with a disability who requires an accommodation in order to participate in this program, please contact the Continuing Medical Education Division in advance at 319-335-8599.

Print clearly Name \_\_\_\_\_  
Address \_\_\_\_\_  
City \_\_\_\_\_  
Degree State/Zip \_\_\_\_\_  
Phone \_\_\_\_\_  
Specialty Business Home  
E-mail \_\_\_\_\_  
Company or Business Name \_\_\_\_\_

**For Office Use Only PN:** 168670

AMA PRA Category 1 Credits™ \_\_\_\_\_ CEUs \_\_\_\_\_

### Registration Fees

Member, Iowa Radiological Society (\$150)	\$ _____
Physician Non-member (\$180)	\$ _____
Alumni of UI Dept of Radiology (\$150)	\$ _____
Radiology Technologists (\$85)	\$ _____
Fellows and Residents in training (No charge)	\$ _____ 0 _____
<b>TOTAL</b>	\$ _____

### Method of Payment

*Payment is required at time of registration. We will not consider you registered until payment is received.*

- I have enclosed a check made payable to **The University of Iowa** in the amount of \$ \_\_\_\_\_
- Please charge registration and tuition fees to my:  VISA  Master Card  Discover


Cardholder Name (please print) \_\_\_\_\_


Account Number \_\_\_\_\_


Expiration Date \_\_\_\_\_ 3-digit security code on back \_\_\_\_\_


Signature \_\_\_\_\_

### FOUR WAYS TO REGISTER

 University of Iowa Carver College of Medicine  
Continuing Medical Education Division  
100 Medicine Administration Building  
Iowa City, Iowa 52242-1101

 Phone: (319) 335-8599

 FAX registration to:  
(319) 335-8327

 Online: [www.medicine.uiowa.edu/cme](http://www.medicine.uiowa.edu/cme)  
and click on Upcoming Programs

The University of Iowa requests this information for the purpose of processing your registration. No persons outside the University of Iowa are routinely provided this information.

For additional information on this program and other upcoming CME events at the UI Carver College of Medicine, please visit [www.medicine.uiowa.edu/cme/](http://www.medicine.uiowa.edu/cme/).



**UNIVERSITY OF IOWA**  
**CARVER COLLEGE**  
**OF MEDICINE**

University of Iowa Health Care

Continuing Medical Education  
100 Medical Administration Building  
Iowa City, Iowa 52242-1101



# IOWA RADIOLOGICAL SOCIETY

2017 FALL MEETING

SATURDAY

OCTOBER 21, 2017

MARRIOTT CORALVILLE HOTEL &  
CONFERENCE CENTER

300 EAST 9TH STREET  
CORALVILLE, IA

